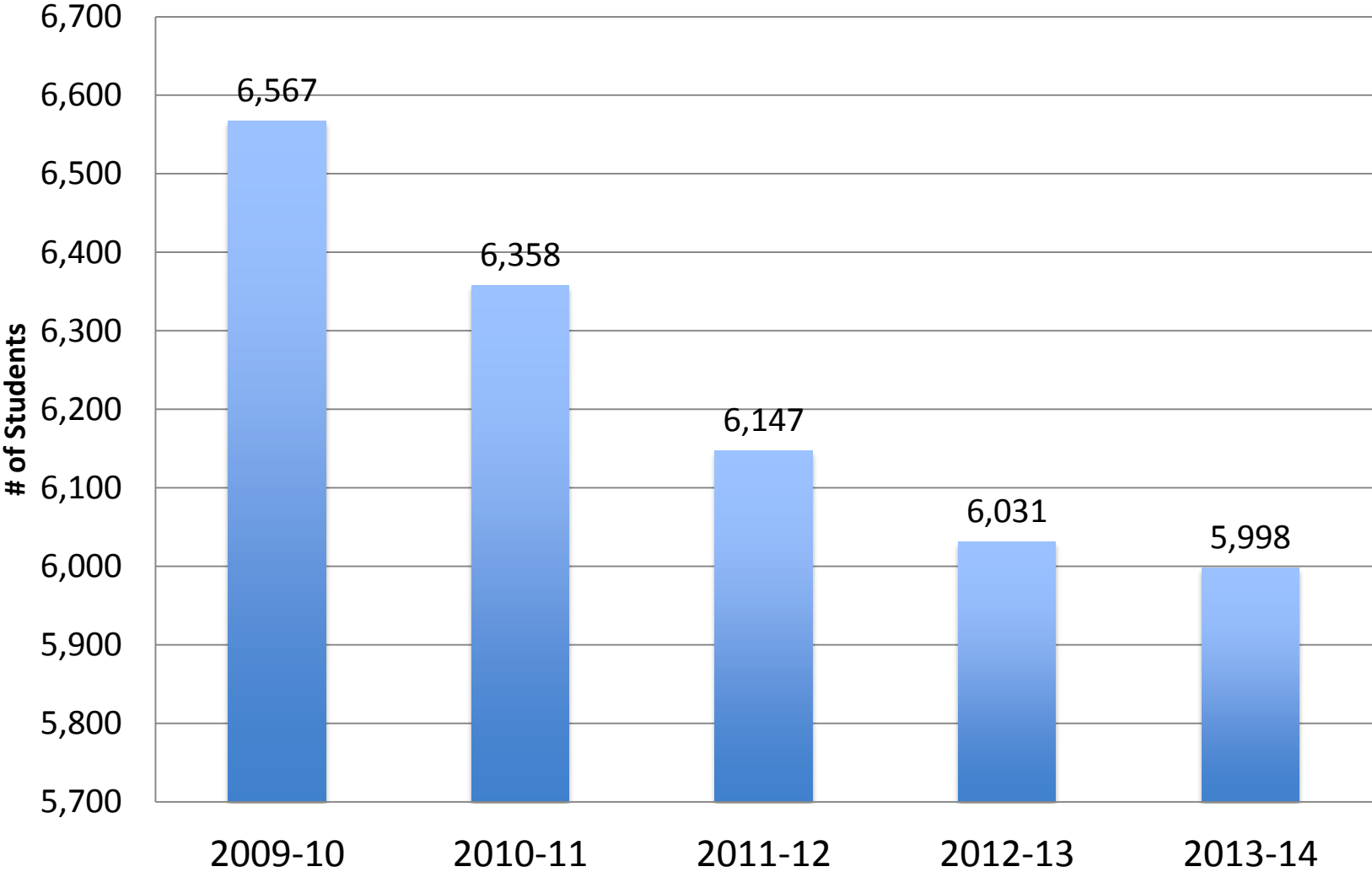


Enrollment Trend Data

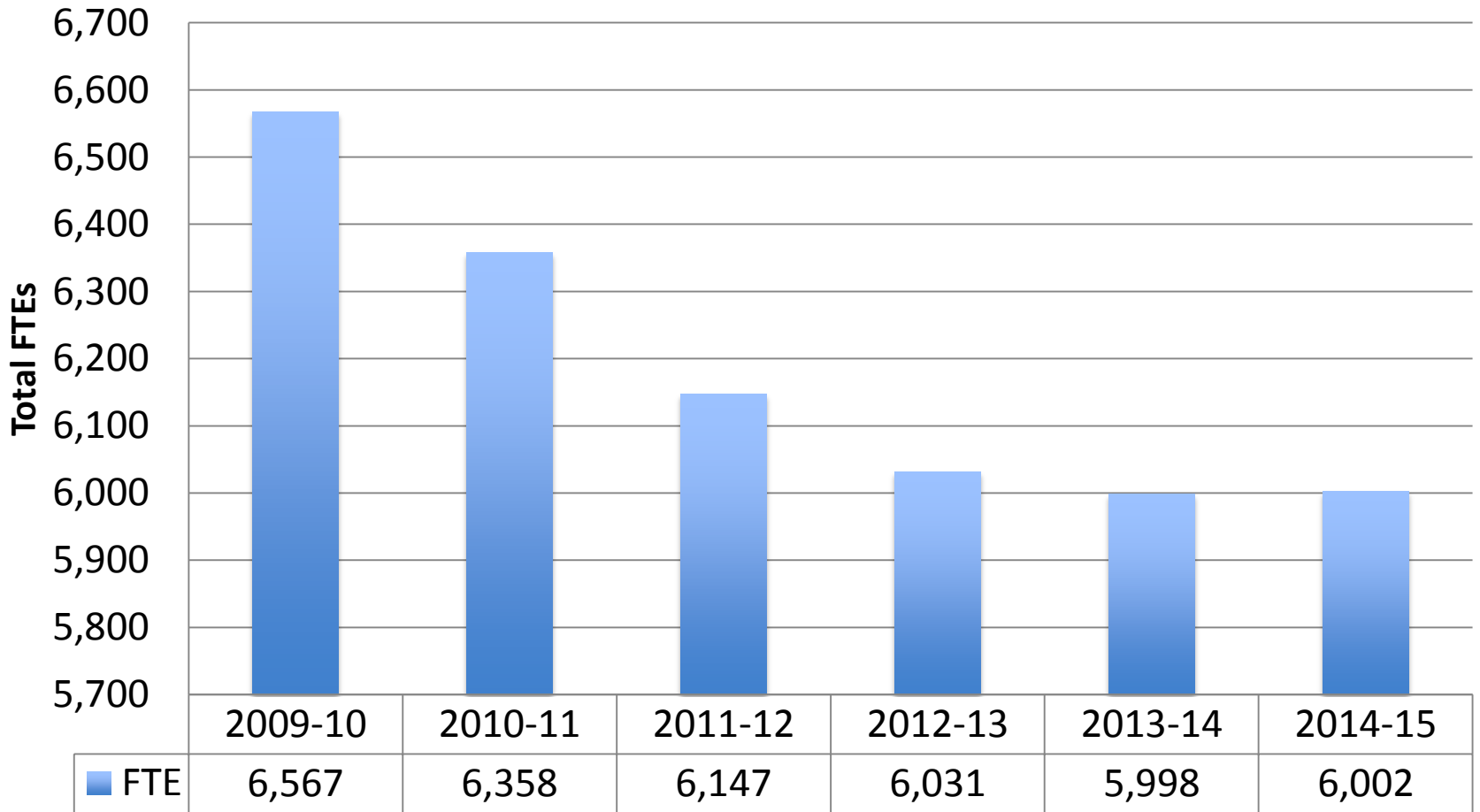
Brighton Area Schools

2009-2015

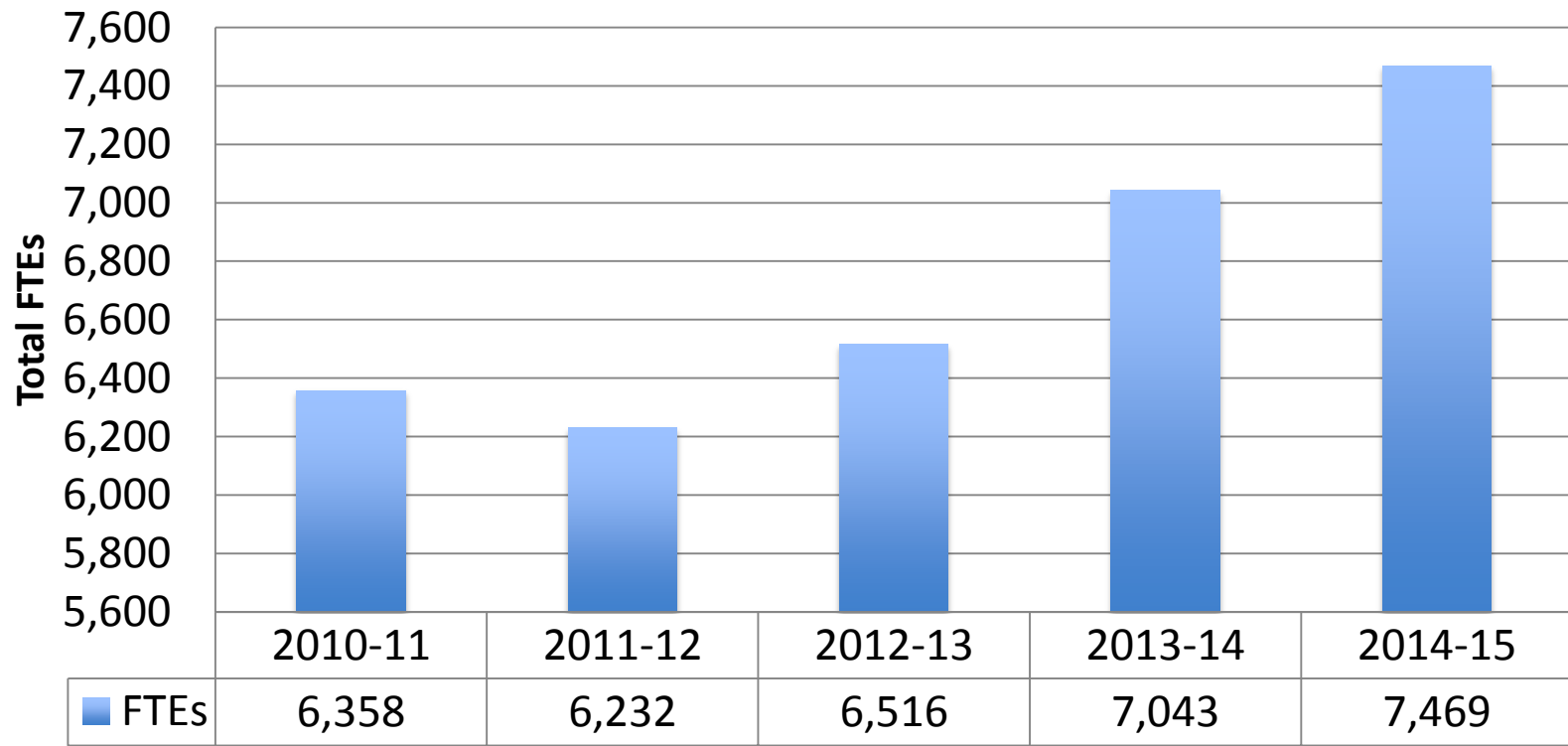
BAS Enrollment



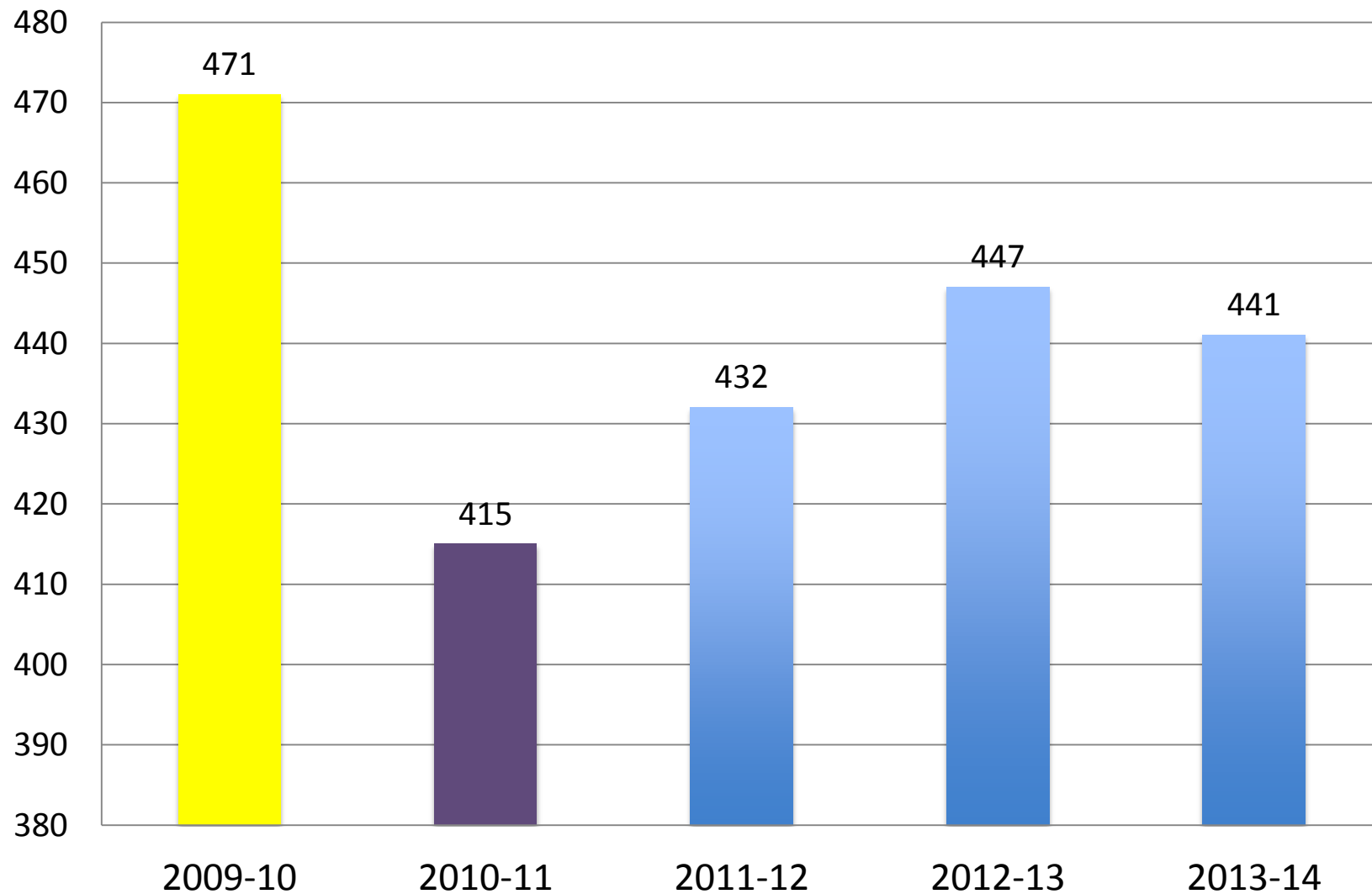
BAS Enrollment Trends



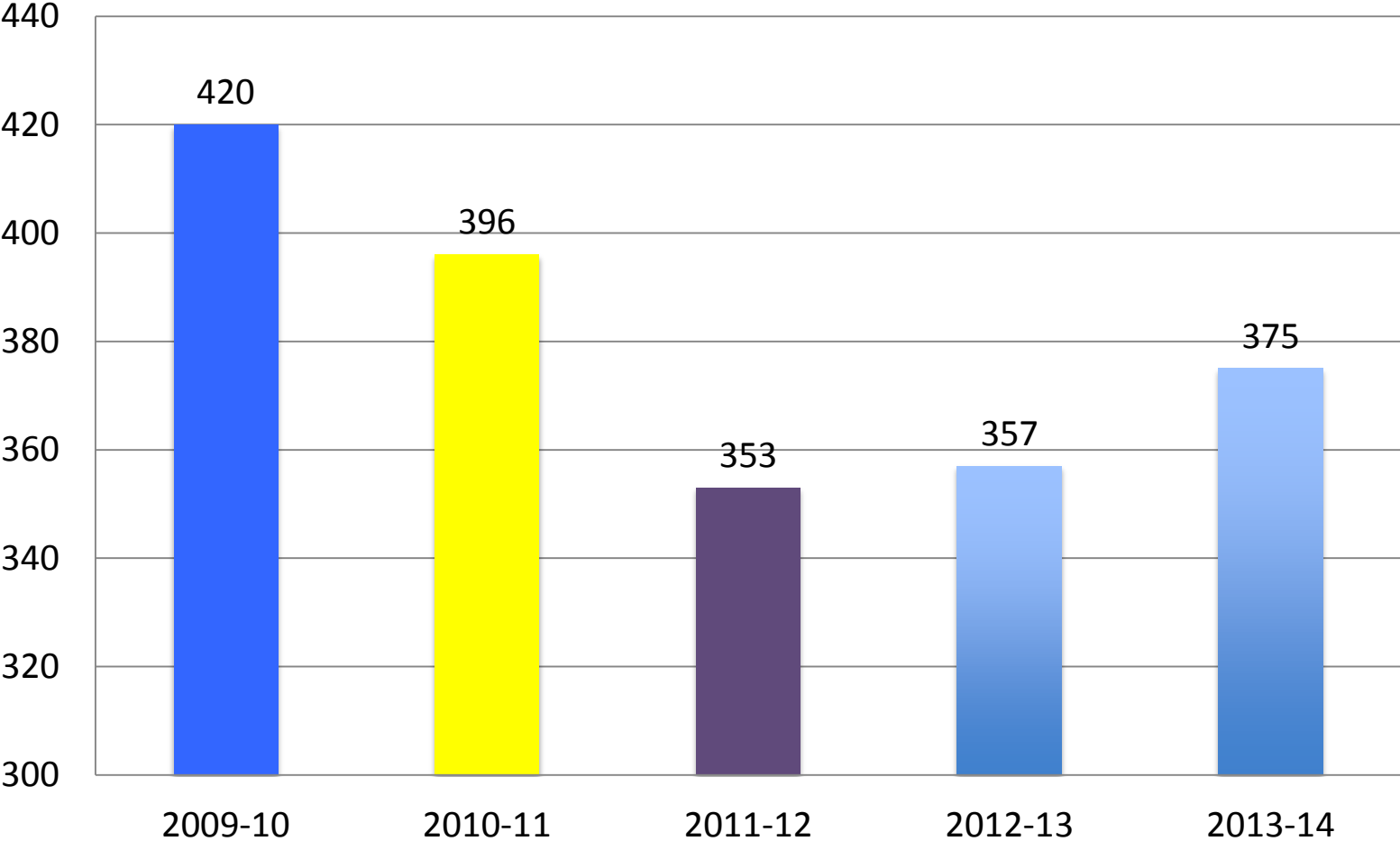
BAS Enrollment with Shared Services



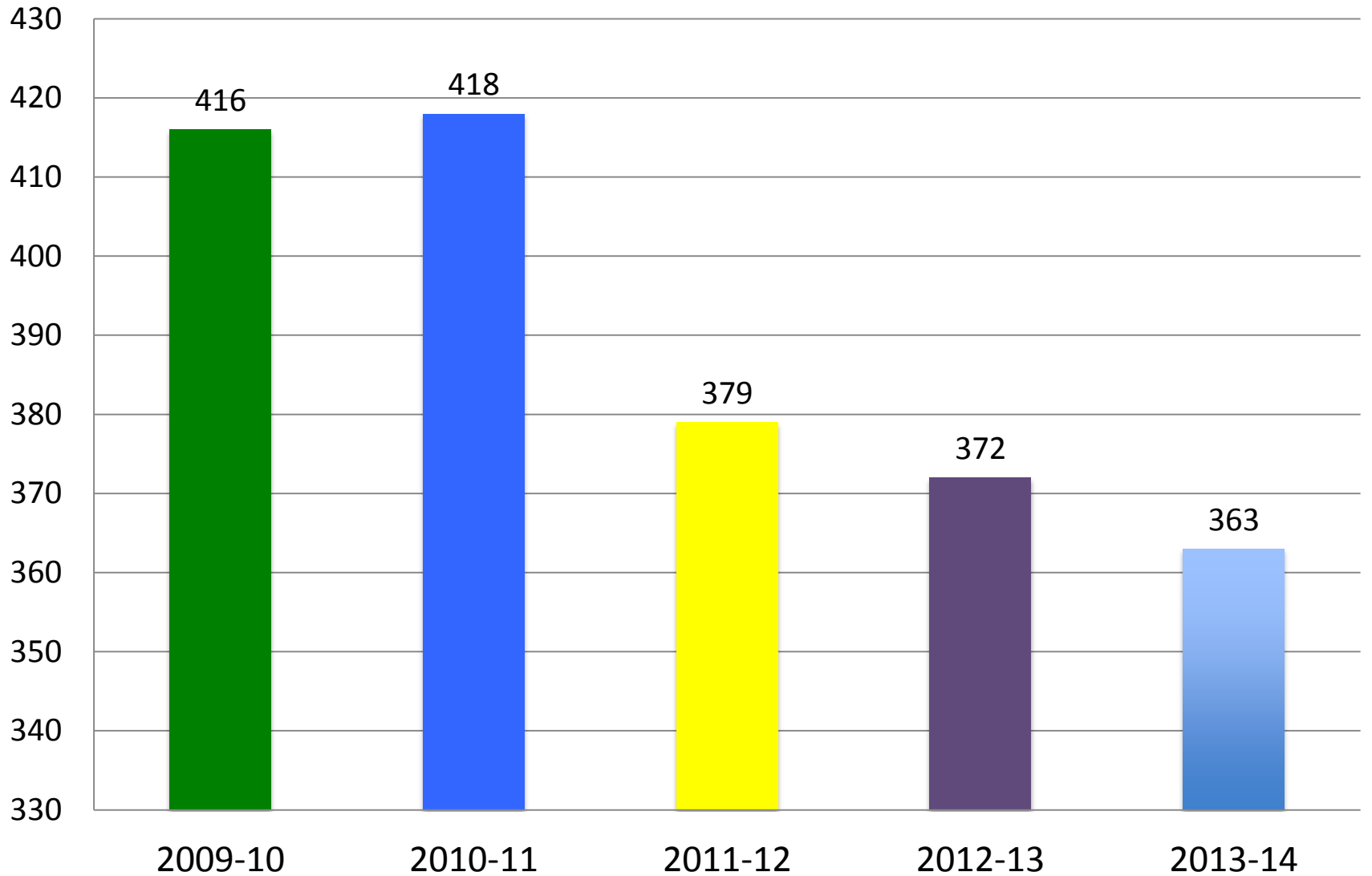
BAS Kindergarten Enrollment



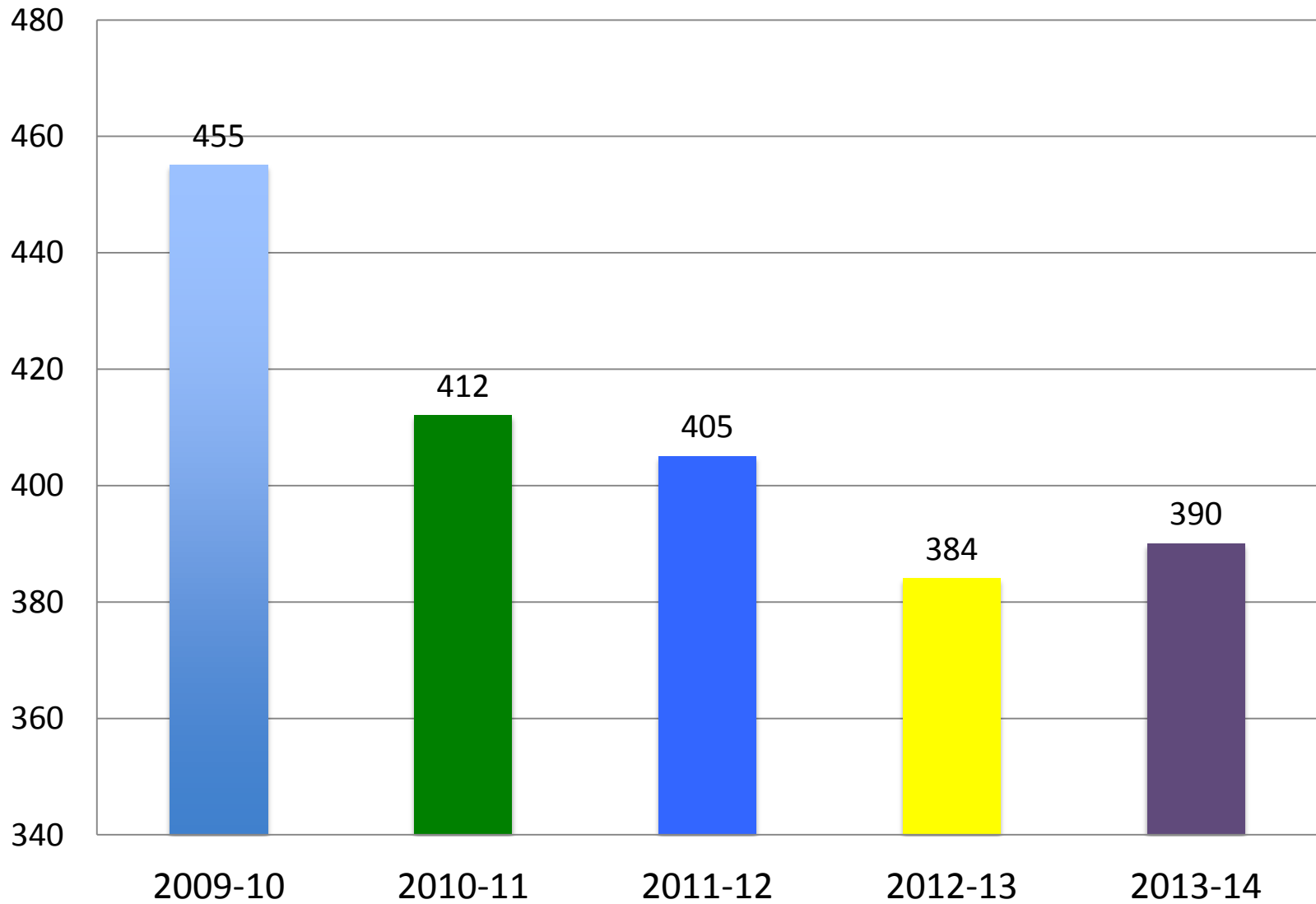
BAS 1st Gr Enrollment



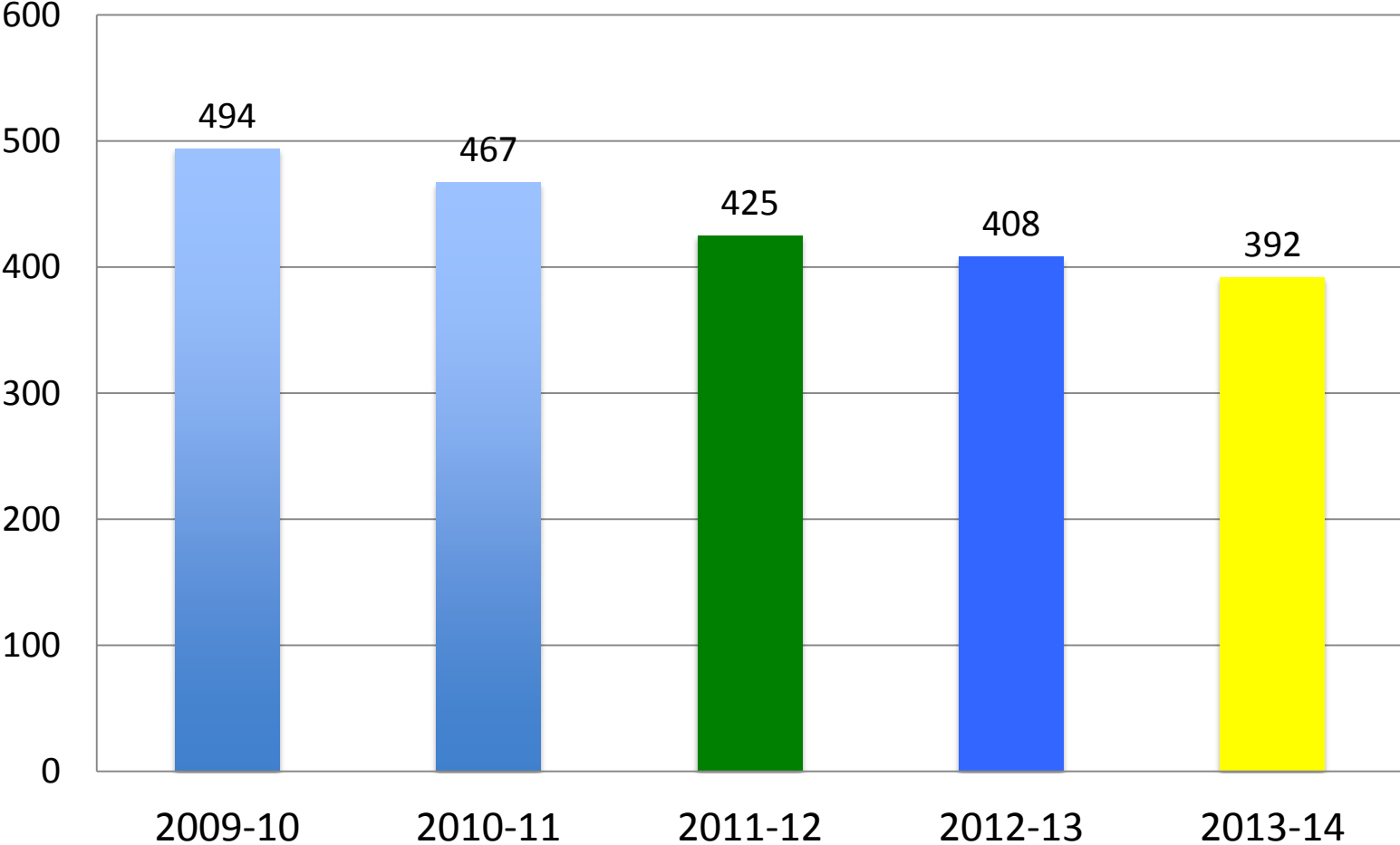
BAS 2nd Gr Enrollment



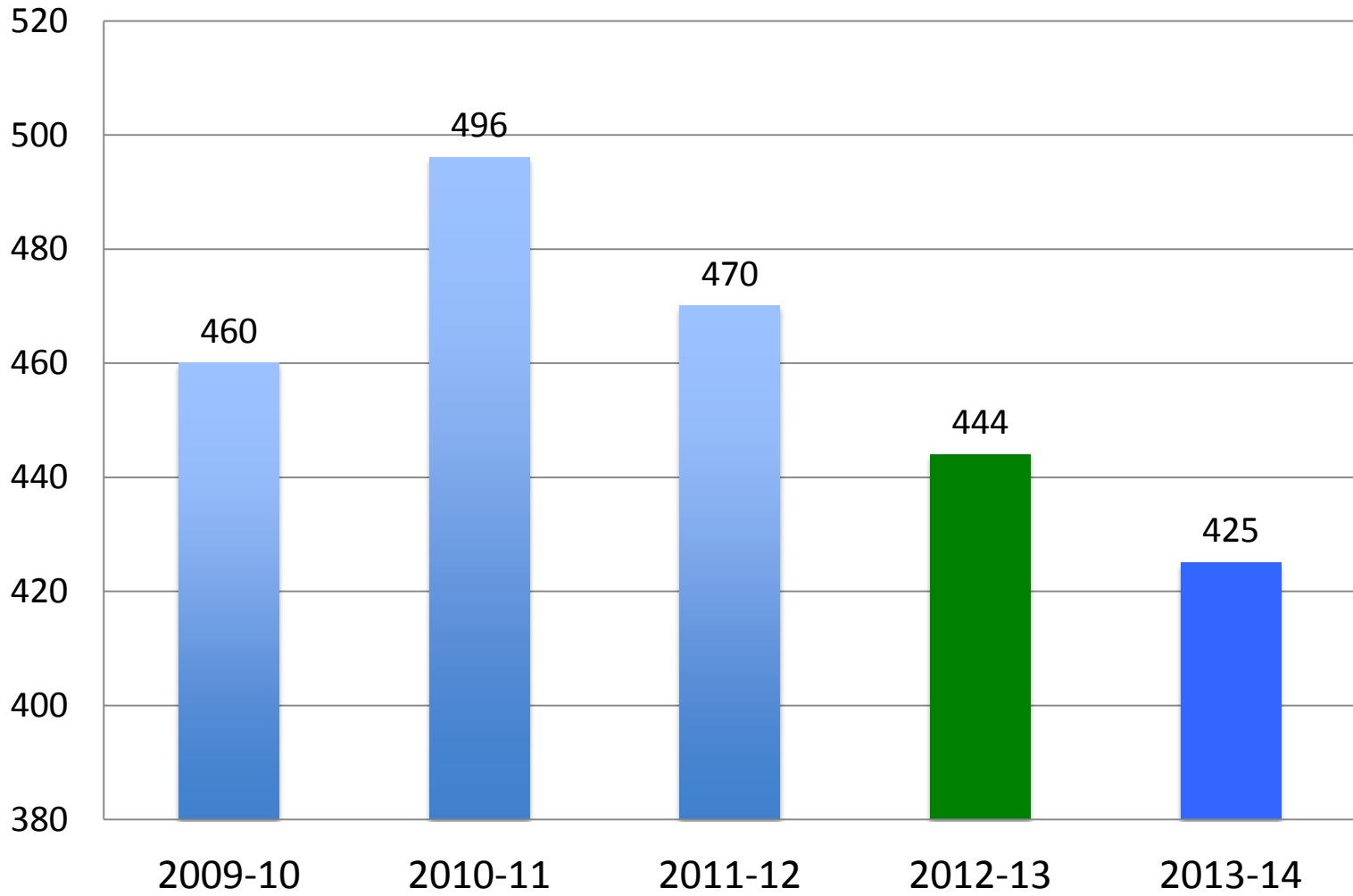
BAS 3rd Gr Enrollment



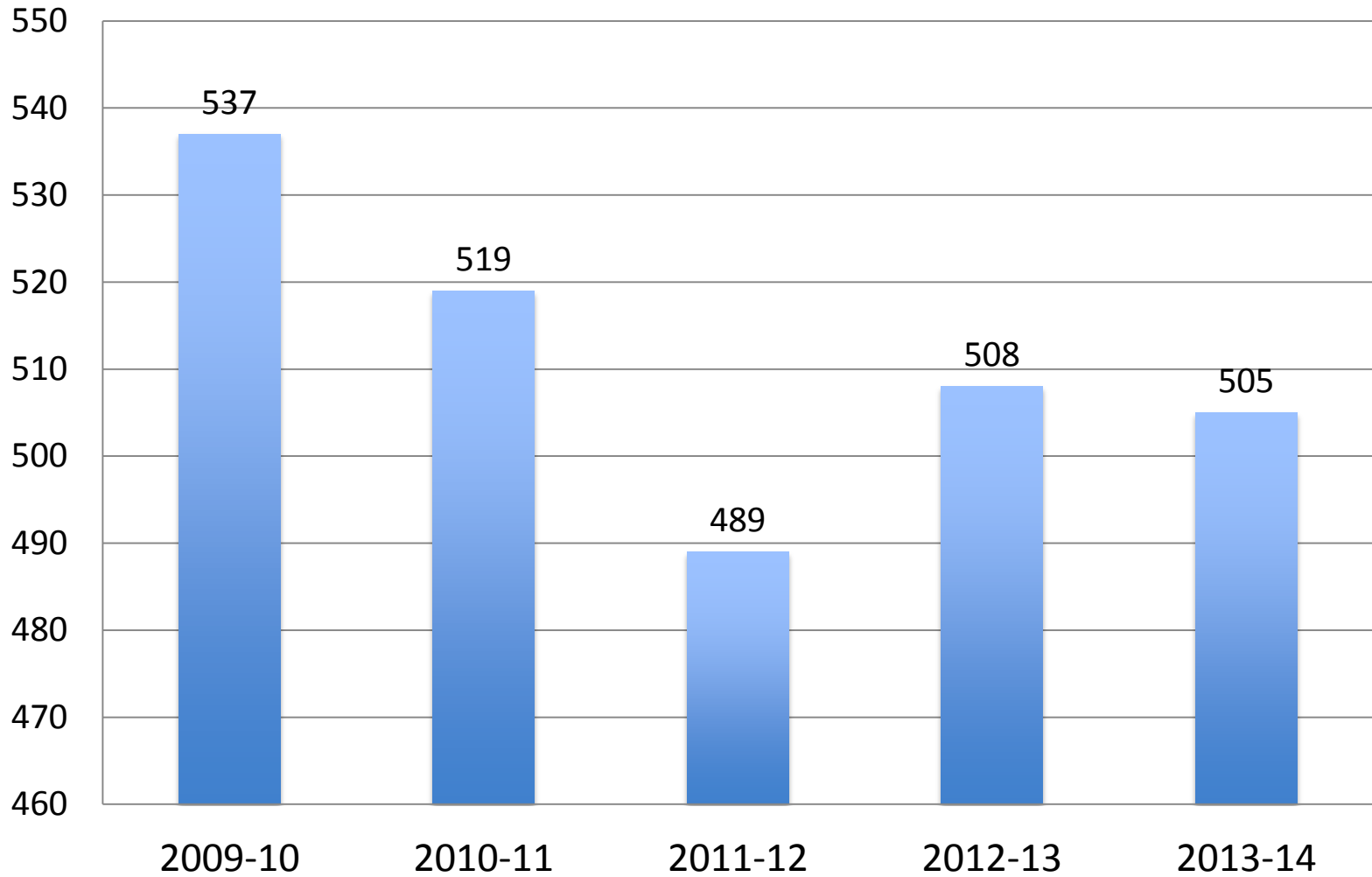
BAS 4th Gr Enrollment



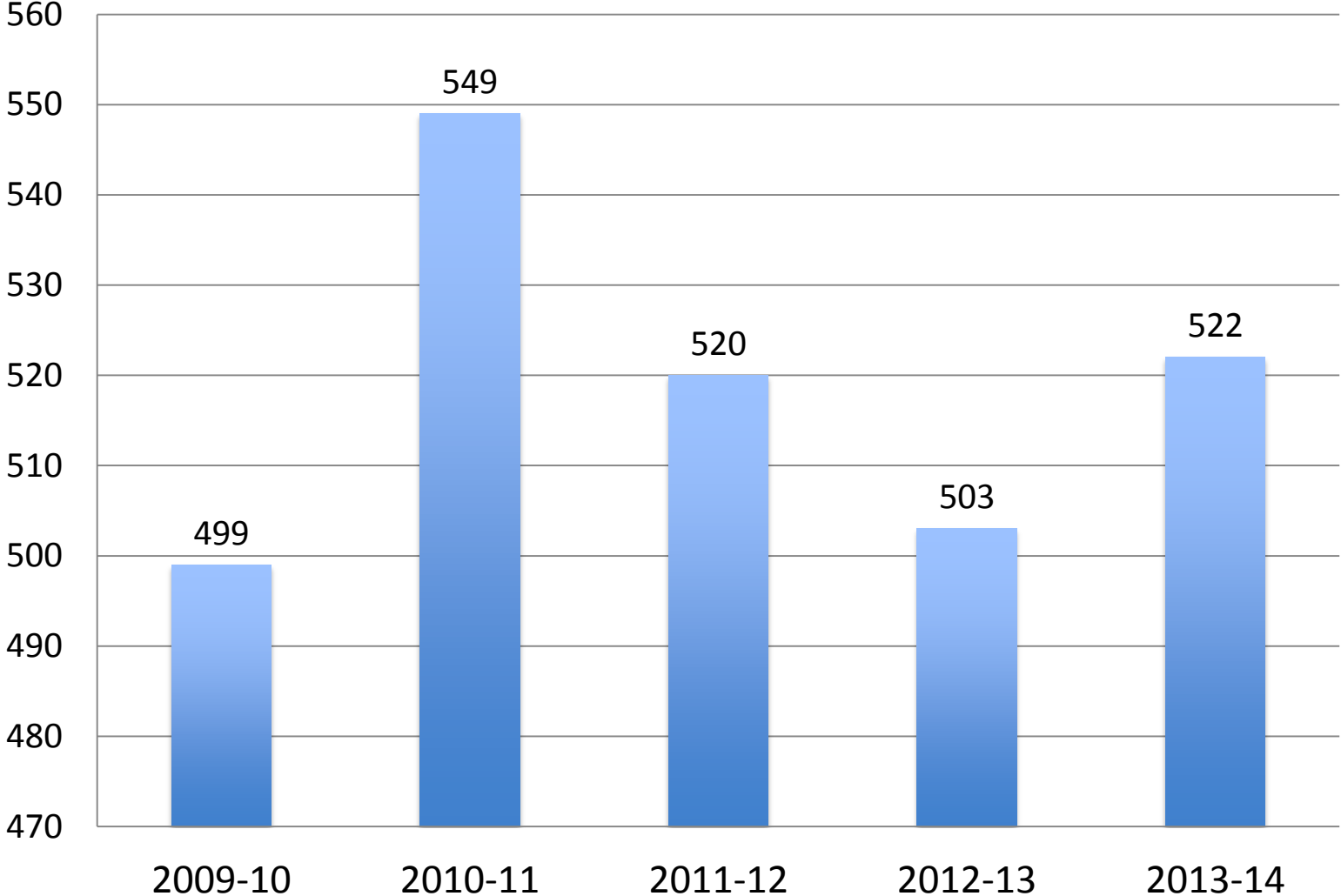
BAS 5th Gr Enrollment



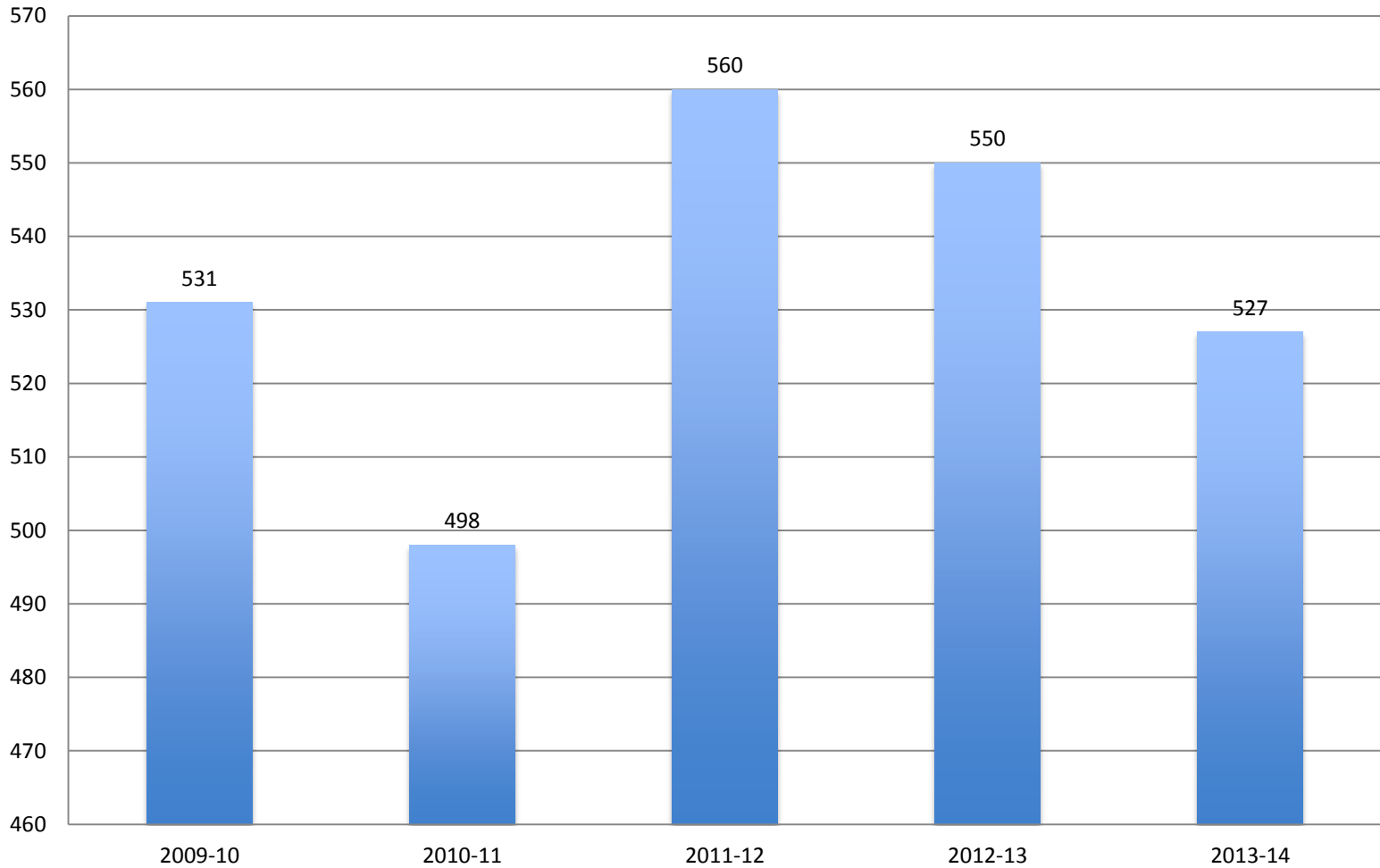
BAS 7th Gr Enrollment



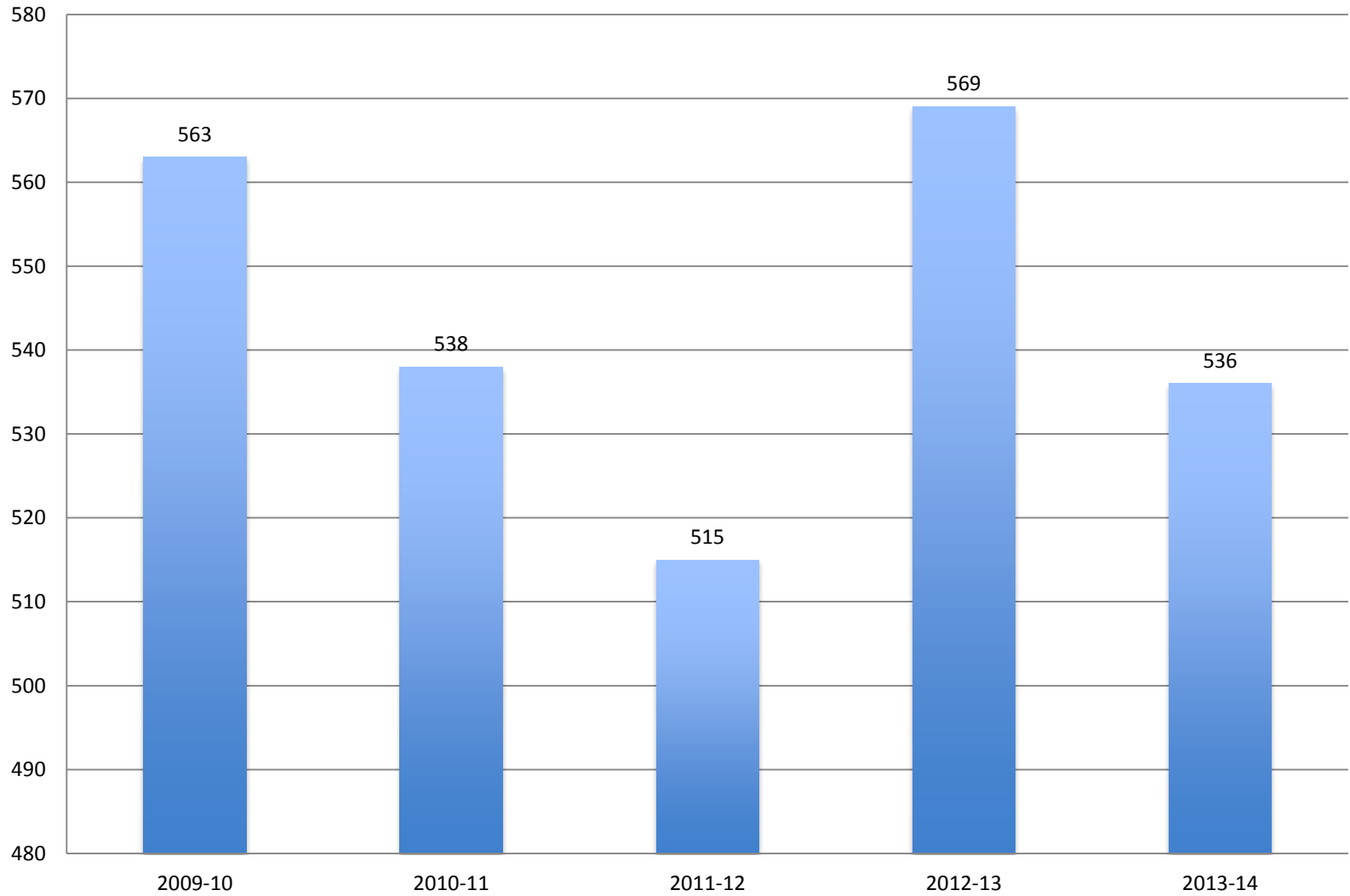
BAS 8th Gr Enrollment



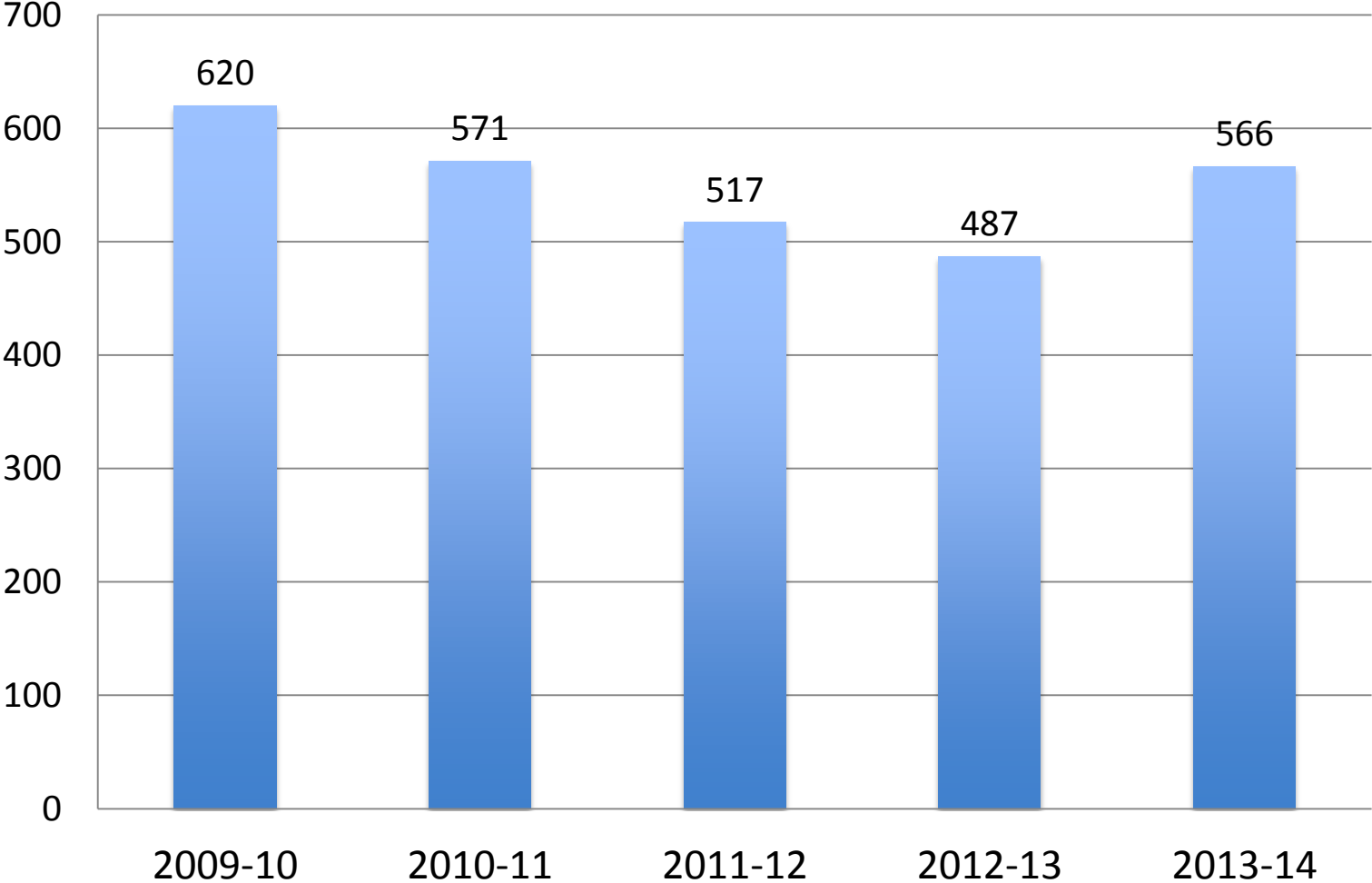
BAS 9th Gr Enrollment



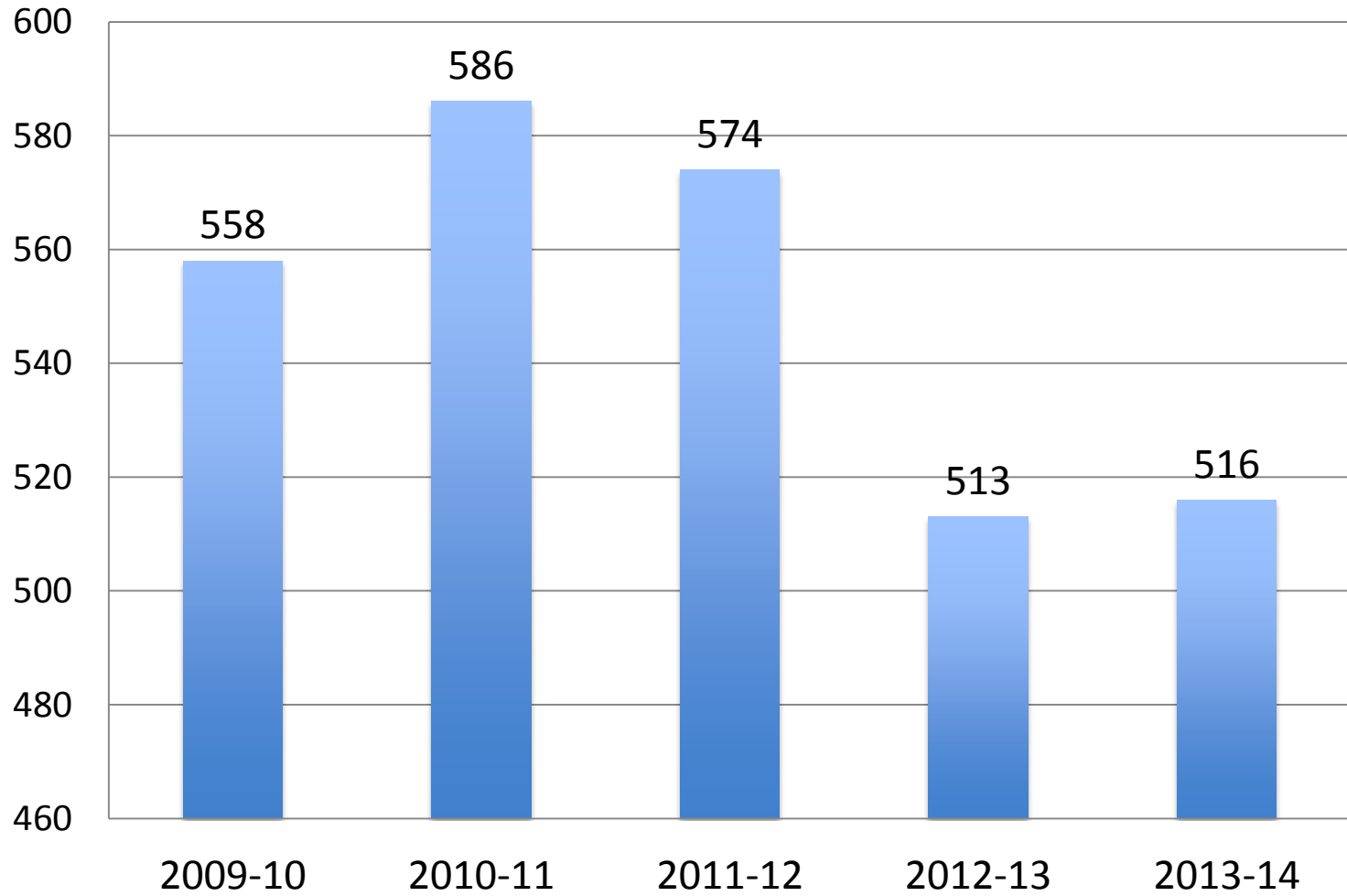
BAS 10th Gr Enrollment



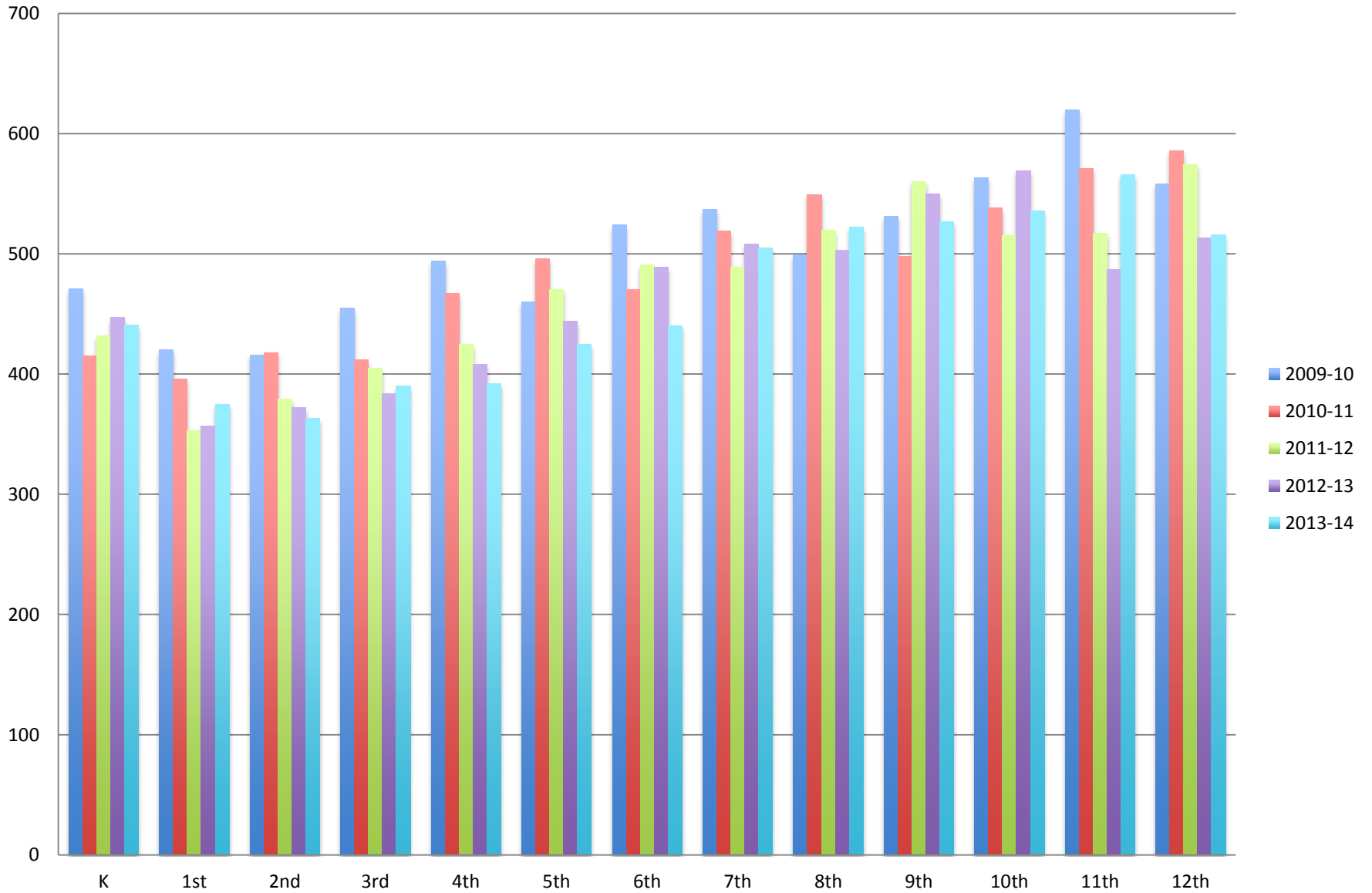
BAS 11th Gr Enrollment



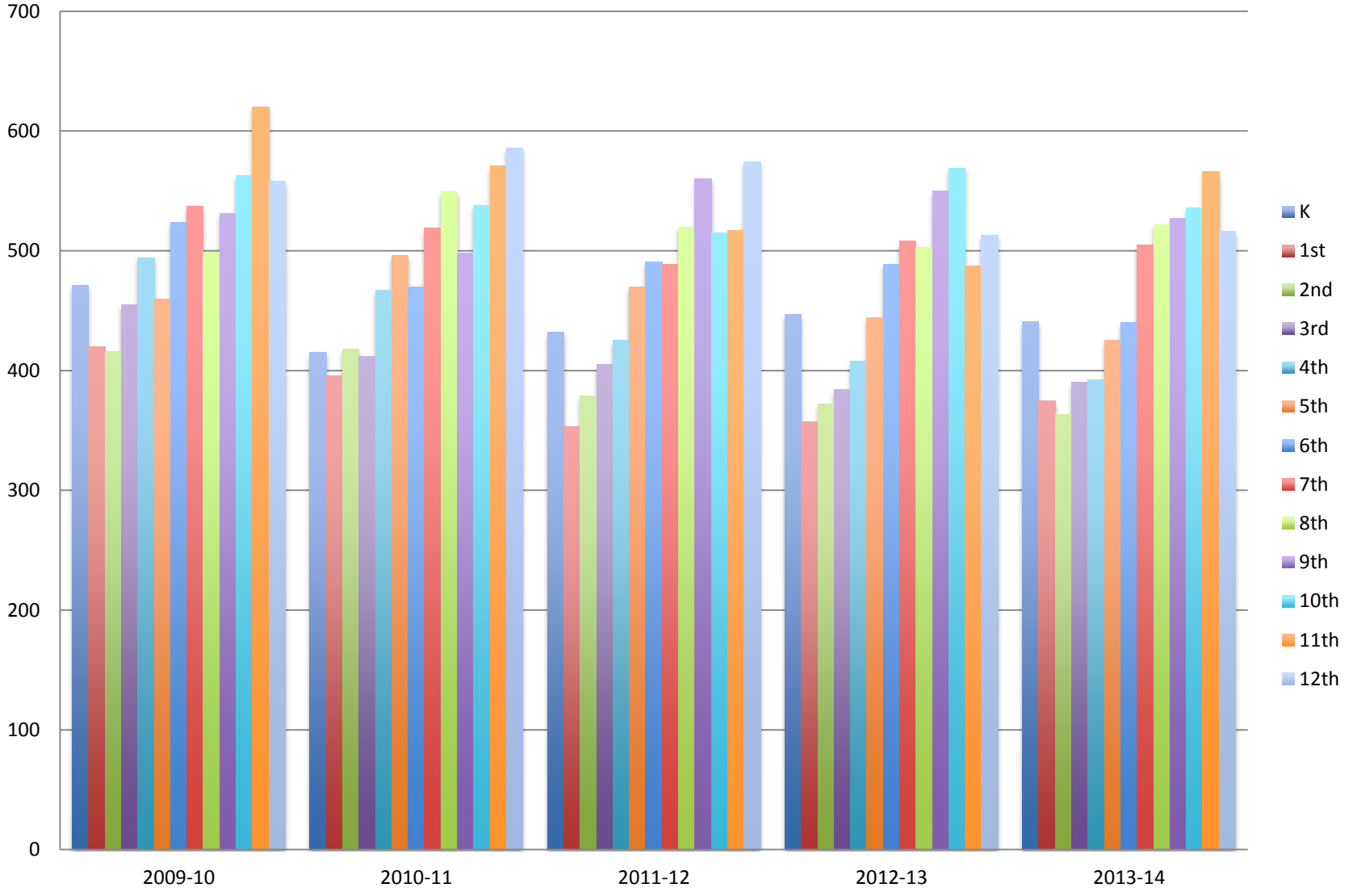
BAS 12th Gr Enrollment



BAS Enrollment by Grade



BAS Enrollment by Year



BAS Enrollment: Source MISchoolData.org

	2009-10	2010-11	2011-12	2012-13	2013-14
K	471	415	432	447	441
1st	420	396	353	357	375
2nd	416	418	379	372	363
3rd	455	412	405	384	390
4th	494	467	425	408	392
5th	460	496	470	444	425
6th	524	470	491	489	440
7th	537	519	489	508	505
8th	499	549	520	503	522
9th	531	498	560	550	527
10th	563	538	515	569	536
11th	620	571	517	487	566
12th	558	586	574	513	516